

# SOLVE BOOT PROBLEM THEOUGH RS232

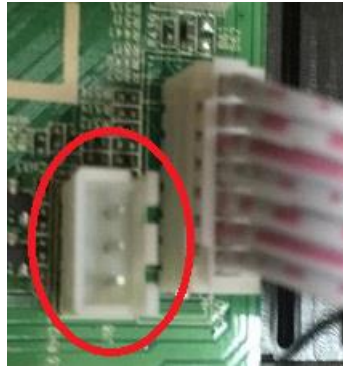
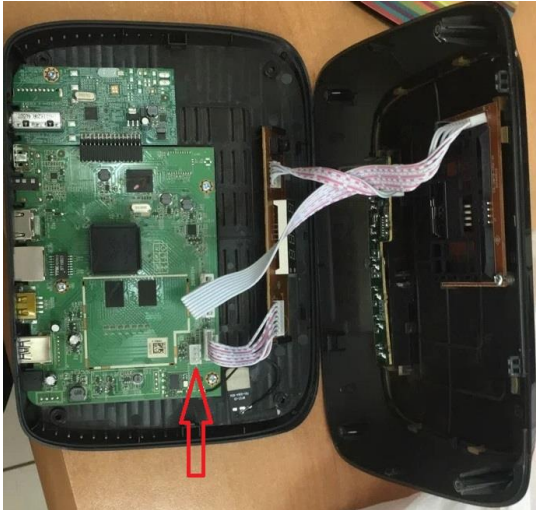
If FUNNY BOX OR TIGER T3000 stopped at **BOOT** and it say **NOT INTIALIZED**

**Preparation:**

**Download Tiger T3000 loader**

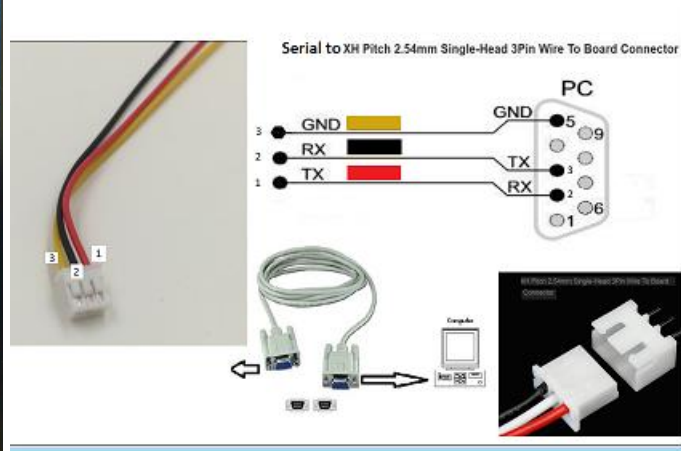
[https://www.4shared.com/rar/EVvkBPW3ei/t3000\\_loder.html](https://www.4shared.com/rar/EVvkBPW3ei/t3000_loder.html)

Funny box and tiger t3000 don't have RS 232 port outside. Just open the receiver and you will see this.



This is funny box's picture which 3 pins and Tiger T3000 has 4 pins.

You have to make make your own RS 232 cable with 3 pin or 4 pins like this.

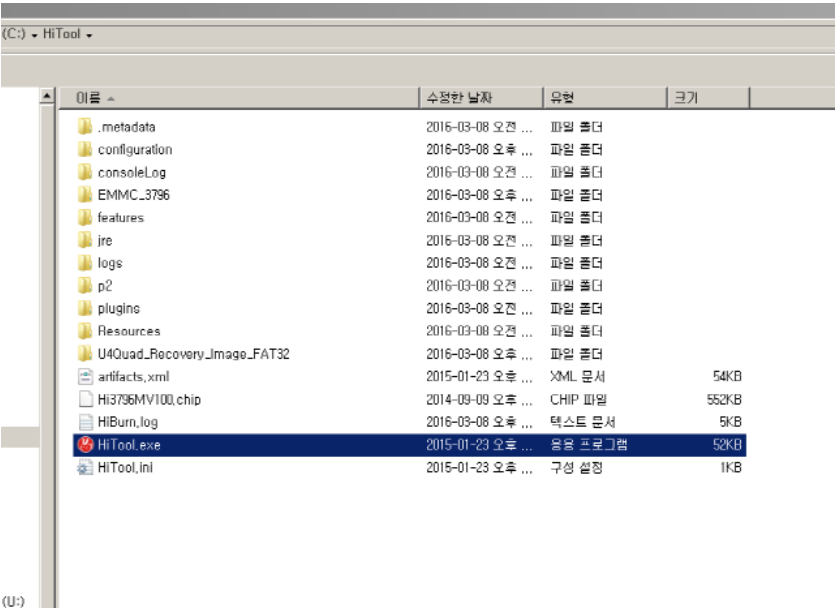


And connect RS232 cable from PC to FUNNY BOX OR TIGER T3000

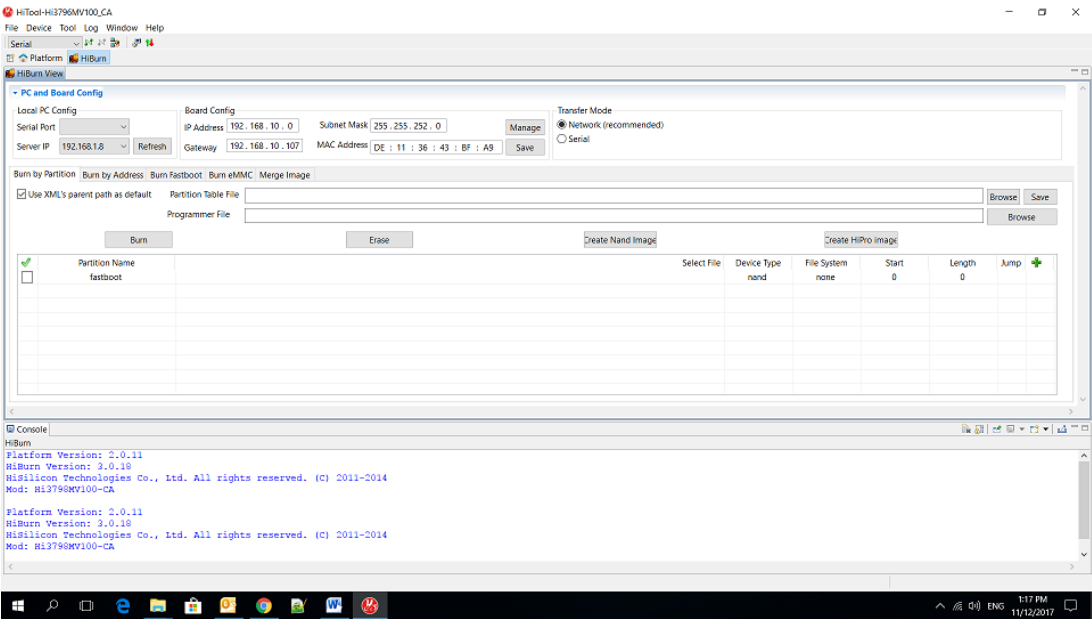


# OPEN TIGER T3000 LOADER FOLDER (HITOOL)

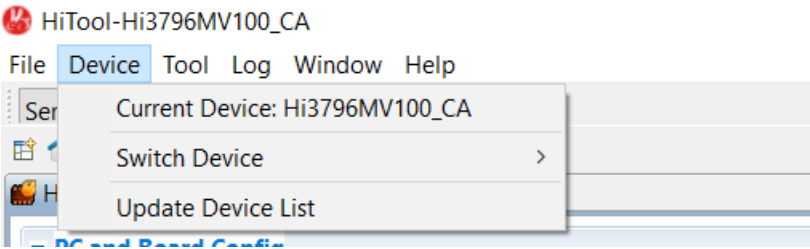
Click Hitool program



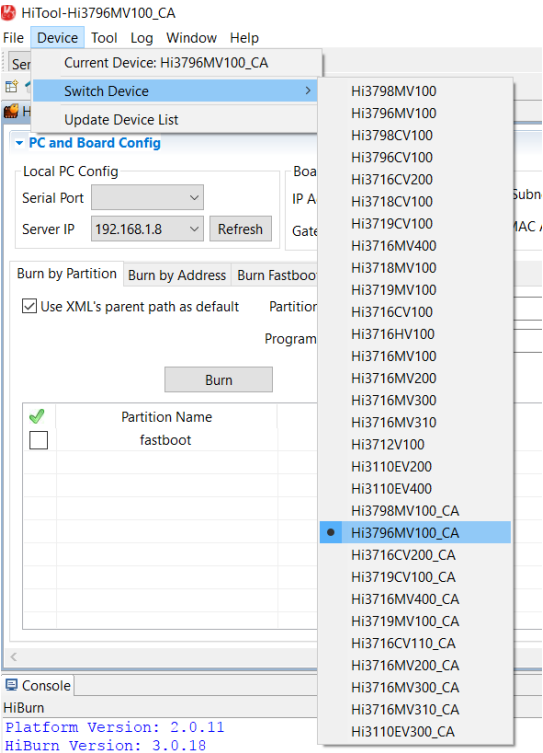
IT WILL OPEN



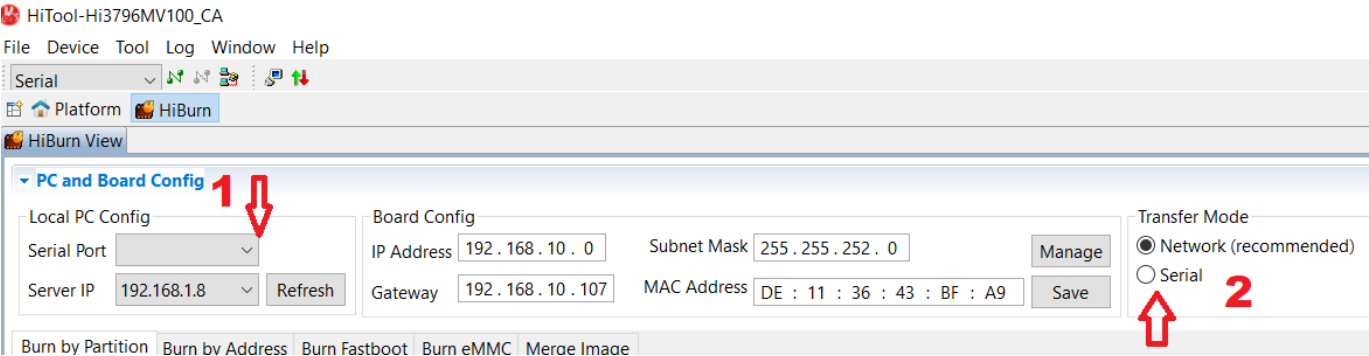
# CLICK Device



## SELECT YOUR DEVICE

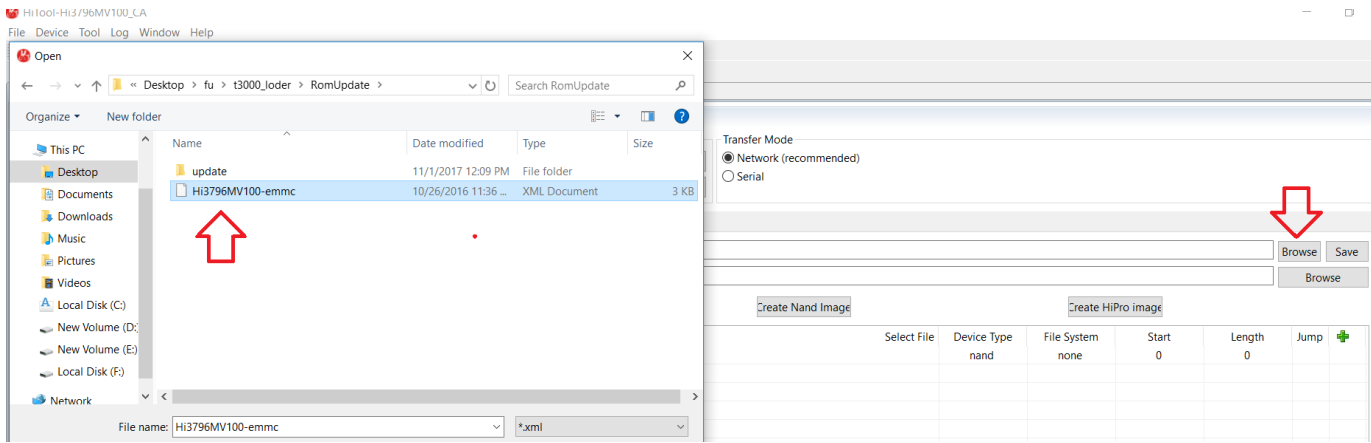


Select Serial Port : your Serial Port on PC.  
Select Transfer Mode : Serial



CLICK **BROWSER**

Select **Hi3796MV100-emmc.xml** (This file will be located in **MAINTAIN**



CLICK **BURN** BUTTON (BEFORE CLICK BURN MAKE SURE YOUR RECEIVER IS PLUGGED OFF)

urn by Partition **Burn by Address** Burn Fastboot Burn eMMC Merge Image

☒ Use XML's parent path as default Partition Table File

Programmer File

**Burn**

NOW PLUGGED ON YOUR RECEIVER AND IT WILL START TO BURN.

WAIT TILL IT FINISH AND IT WILL REBOOT ITSELF. IT WILL TAKE 5 MINS PROGAM SERIAL

